

6

5

4

3

2

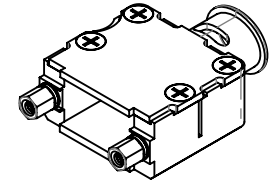
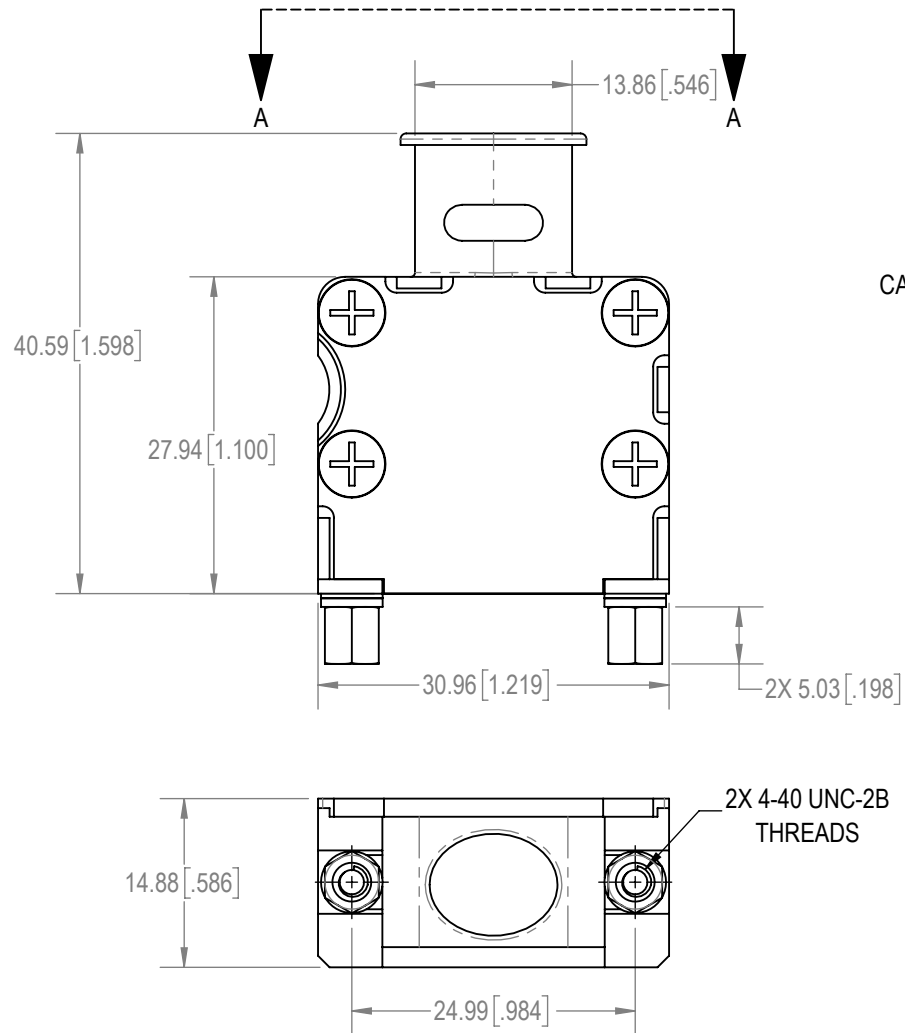
1

D

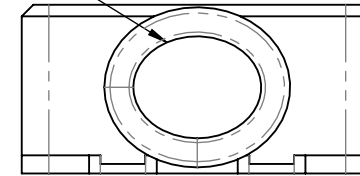
C

B

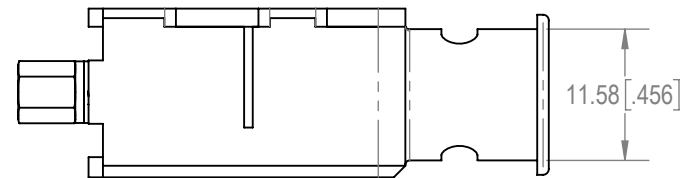
A





CABLE OPENING



AUXILIARY A-A

**NOTES:**

- MATERIAL AND FINISHES:**
 HOOD AND HOOD COVER: ALUMINUM, ELECTROLESS NICKEL PLATE.
 COVER SCREWS: STEEL, NICKEL PLATE.
 JACKSCREWS: STEEL, ZINC PLATE WITH CHROMATE SEAL.
 WASHERS: BRASS, ZINC PLATE WITH CHROMATE SEAL.
- DETAILED PRODUCT, MECHANICAL AND ELECTRICAL INFORMATION IS AVAILABLE IN THE LATEST D-SUB ACCESSORIES PRODUCT PUBLICATION AT CONNECTPOSITRONIC.COM.
- PRODUCT IS COMPLIANT TO THE CURRENT RoHS DIRECTIVE.

BY SS		CHK AP		3RD ANGLE 		<div>POSITRONIC BELIEVES THE DATA ON THE DRAWING TO BE RELIABLE. THE USER EMPLOYS SUCH INFORMATION AT HIS OWN DISCRETION AND RISK. POSITRONIC ASSUMES NO RESPONSIBILITY FOR RESULTS OBTAINED OR DAMAGES INCURRED FROM USE OF SUCH INFORMATION IN WHOLE OR IN PART.</div> <div><div>Positronic® CONNECTPOSITRONIC.COM</div></div>	
APR AB		RELEASED DATE: 2024-01-17		SCALE NTS			
TOLERANCES +0.03mm [.001 INCHES] FOR MALE CONTACT MATING DIAMETERS +0.08mm [.003 INCHES] FOR CONTACT TERMINATION DIAMETERS +0.13mm [.005 INCHES] FOR ALL OTHER DIAMETERS +0.38mm [.015 INCHES] FOR ALL OTHER DIMENSIONS ±5° FOR ALL ANGLES DIMENSION ARE IN MILLIMETERS [INCHES]							
PART NUMBER D9000AWNT20/AA				SERIES D			
TITLE D9000AWNT20/AA							
CREATED ON: 2024-01-17		SHEET SHEET 1 OF 1		REV B			

6

5

4

3

2

1

D

C

B

A